

STR analysis of ARPE-19 cells

Human Cell Line DNA Typing Report

Cell Line DNA Typing Report

Case Number: ECID20170003
Report Date: 04/25/2017

Mission Biotech

10F-3, No.3, Yuanchi Street
Nangang, Taipei
Taiwan 115
Tel: 886 2 26557128
Email: service@missionbio.com.tw

Sample Information :

- i. Applicant Name: 謝逸憲 Yi-Hsien Hsieh
- ii. Institution: 中山醫學大學醫學系生化學科 Department of Biochemistry, School of Medicine, ChungShan Medical University
- iii. Sample Description: ARPE-19
- iv. Sample type: Cell Pellet
- v. Sample Received Date: 04/18/2017

Allele table for the tested cell DNA

STR Locus	Repeat Numbers
D5S818	13
D13S317	11,12
D7S820	9,11
D16S539	9,11
vWA	16,19
TH01	6,9.3
Amelogenin	X,Y
TPOX	9,11
CSF1PO	11
D21S11	28,29

Test Description :

CaseNumber: ECID20170003
Test Date: 04/21/2017

Sample was extracted by Roche
Magna Pure Compact System.
DNA conc.= 141.4 ng/ μ l
OD260/280 = 2.01
OD260/230 = 2.22

This test was performed by using the
PromegaGenePrint® 10 System and
analyzed by ABI PRISM 3730 GENETIC
ANALYZER and GeneMapper® Software
V3.7.

Verified by:

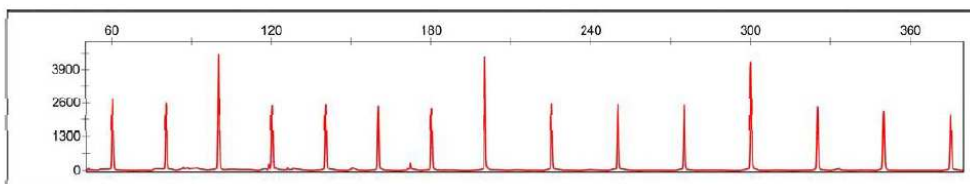
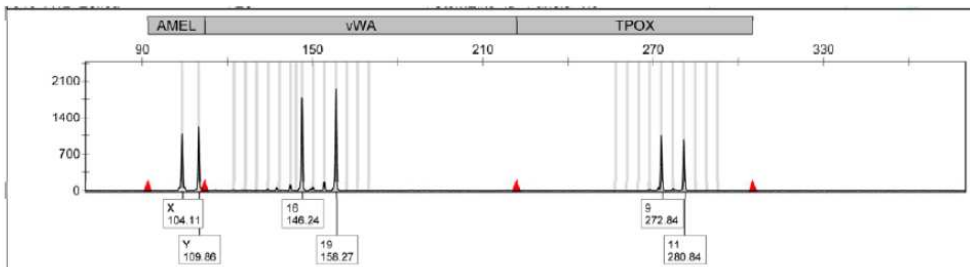
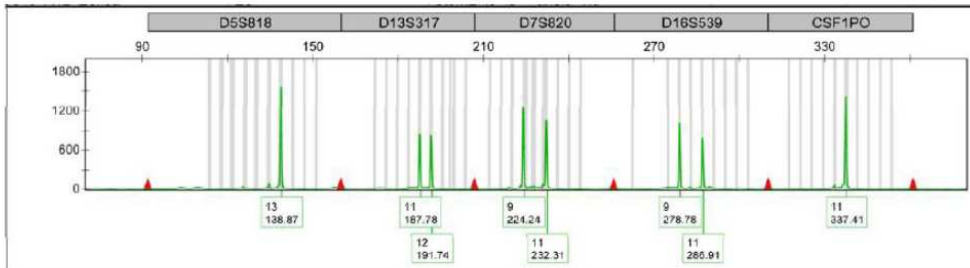
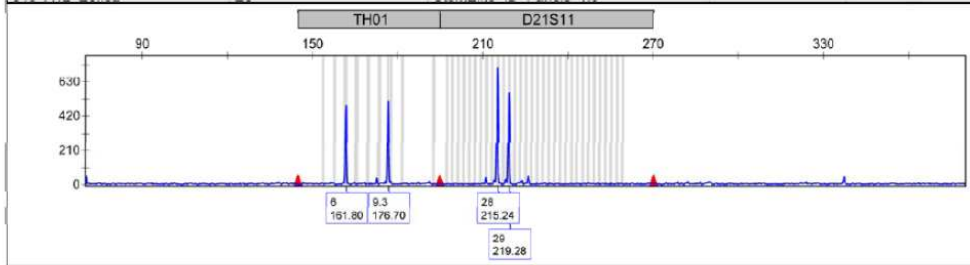
Laboratory Director(Title)

Liang Kuei Chang

04/25/2017

Allele Report

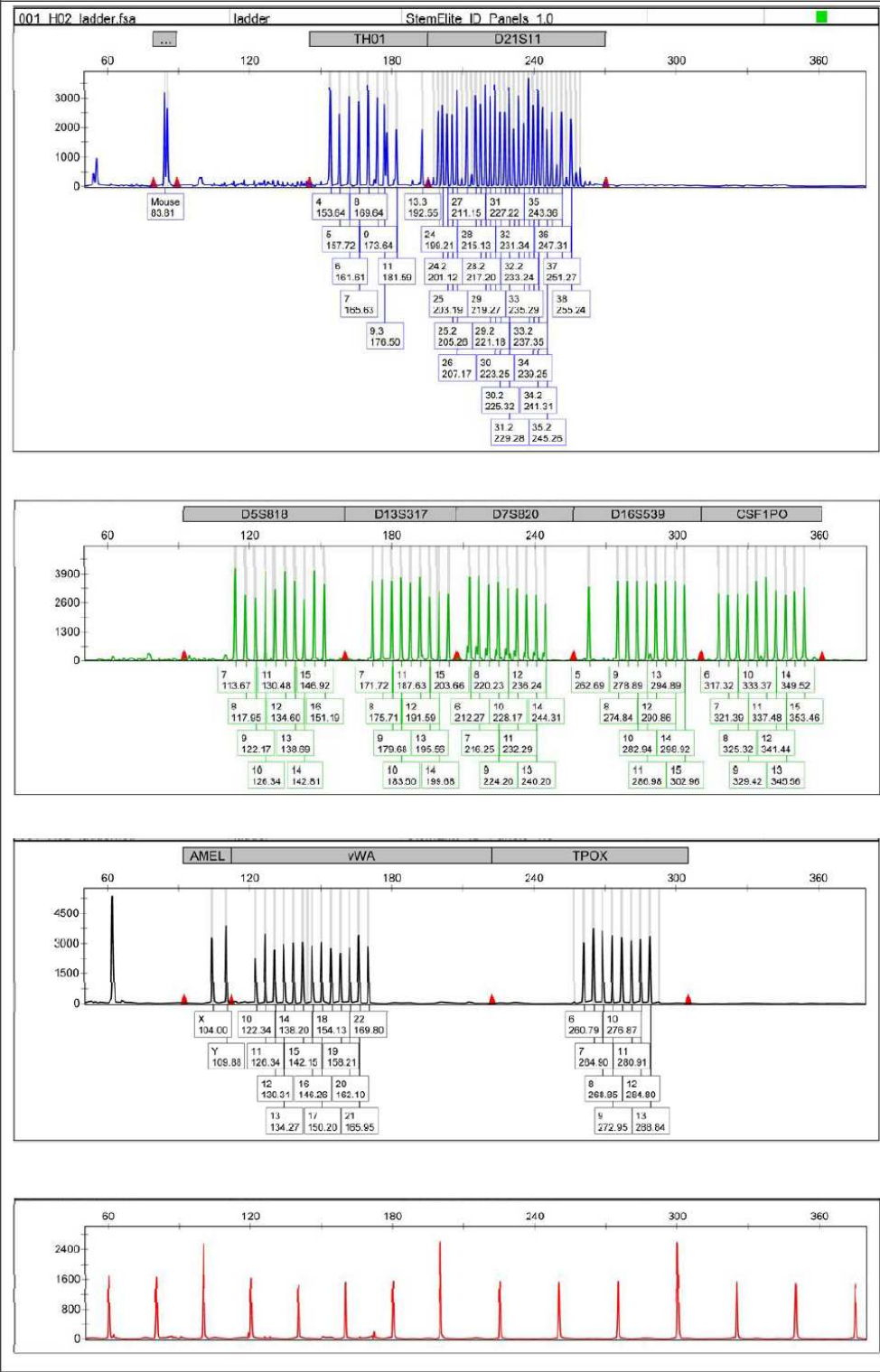
Case Number: ECID20170003



Human Cell Line DNA Typing Report

	Dye	Sample File Name	Marker	Allele	Size	Height	Area
1	B,1	048_A12_ARPE-19.fsa	TH01	6	161.8	491	3023
2	B,2	048_A12_ARPE-19.fsa	TH01	9.3	176.7	517	3311
3	B,3	048_A12_ARPE-19.fsa	D21S11	28	215.24	719	4664
4	B,4	048_A12_ARPE-19.fsa	D21S11	29	219.28	565	3666
5	G,1	048_A12_ARPE-19.fsa	D5S818	13	138.87	1569	10072
6	G,2	048_A12_ARPE-19.fsa	D13S317	11	187.78	856	5314
7	G,3	048_A12_ARPE-19.fsa	D13S317	12	191.74	839	5200
8	G,4	048_A12_ARPE-19.fsa	D7S820	9	224.24	1260	8286
9	G,5	048_A12_ARPE-19.fsa	D7S820	11	232.31	1056	7119
10	G,6	048_A12_ARPE-19.fsa	D16S539	9	278.78	1011	7118
11	G,7	048_A12_ARPE-19.fsa	D16S539	11	286.91	795	5643
12	G,8	048_A12_ARPE-19.fsa	CSF1PO	11	337.41	1425	10583
13	Y,1	048_A12_ARPE-19.fsa	AMEL	X	104.11	1086	7016
14	Y,2	048_A12_ARPE-19.fsa	AMEL	Y	109.86	1223	7596
15	Y,3	048_A12_ARPE-19.fsa	vWA	16	146.24	1782	11638
16	Y,4	048_A12_ARPE-19.fsa	vWA	19	158.27	1951	12602
17	Y,5	048_A12_ARPE-19.fsa	TPOX	9	272.84	1049	7140
18	Y,6	048_A12_ARPE-19.fsa	TPOX	11	280.84	968	6780

Allelic Ladder



- *This STR analysis testing service is for research purposes only, and is not to be used for clinical diagnosis or applications involving humans.*
- *This test is just for typing the specific loci of the applied sample. The applicants may have to compare the results with the database of some bioresource institutes such as ATCC, JCRB or DSMZ by themselves.*



Genelabs Life science www.genelabs.com.tw

Phone:(02)26557678, (04)22633813, (06)2094380

Freecall:0800-231914,0800-094380

