

Supplemental Figure S1

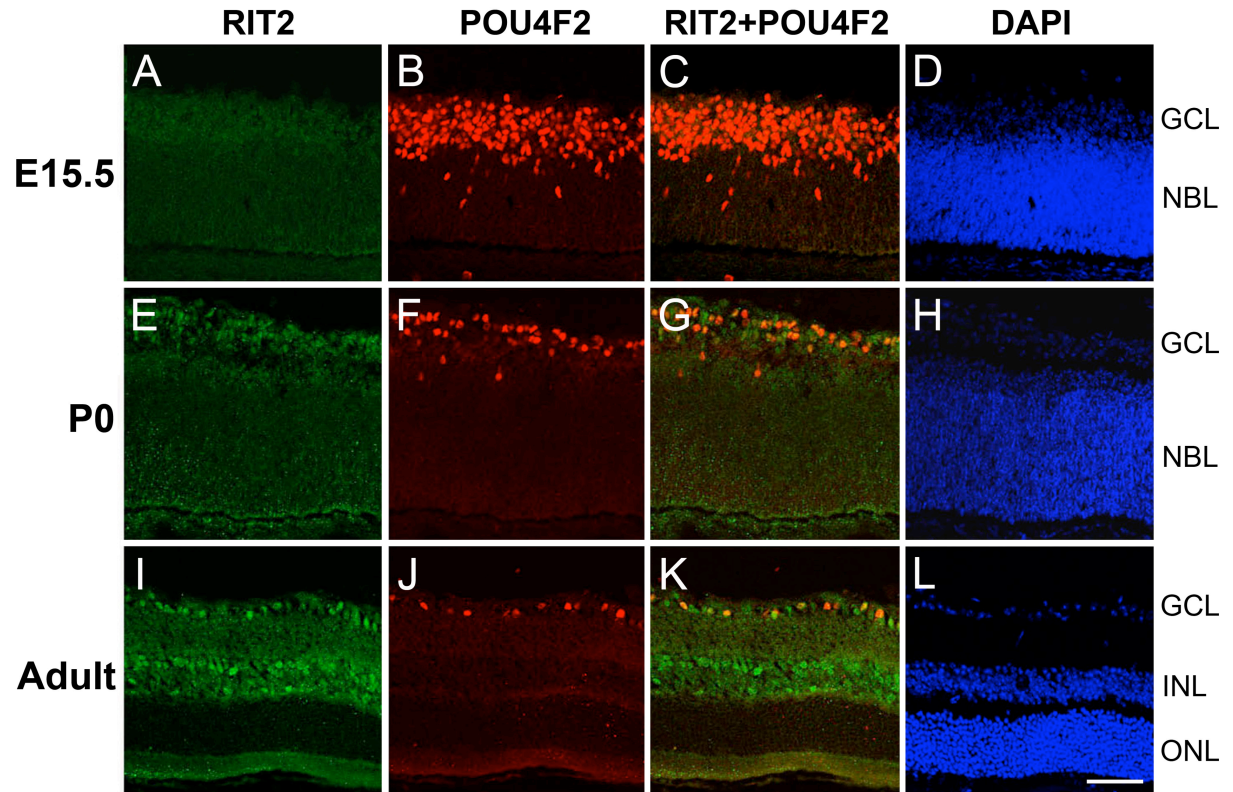


Figure S1. RIT2 expression in the mouse retina at embryonic, newborn, and adult stages.

Immunohistochemistry of retinal sections at embryonic day 15.5 (E15.5; **A-D**), postnatal day 0 (P0; **E-H**), and adult (8 week-old; **I-L**). Staining with anti-RIT2 antibody (**A, E, I**), anti-POU4F2 antibody (**B, F, J**), merged image of RIT2 and POU4F2 (**C, G, K**), and nuclear staining by DAPI (**D, H, L**). Weak staining of RIT2 protein is observed in the GCL and inner NBL at E15.5. RIT2 expression significantly increases during differentiation from embryonic to newborn to adult stages. Scale bar: 50 μ m. GCL, ganglion cell layer; NBL, neuroblastic layer; INL, inner nuclear layer; ONL, outer nuclear layer.